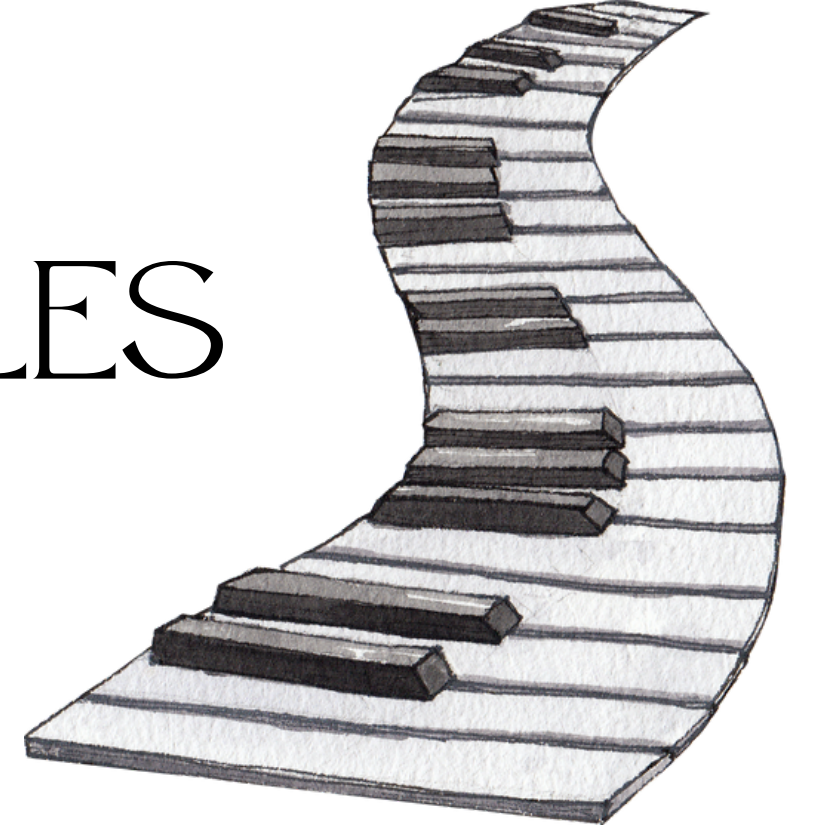


TWO OCTAVE MAJOR SCALES

Natural and Sharp Scales



C Major

6 G Major

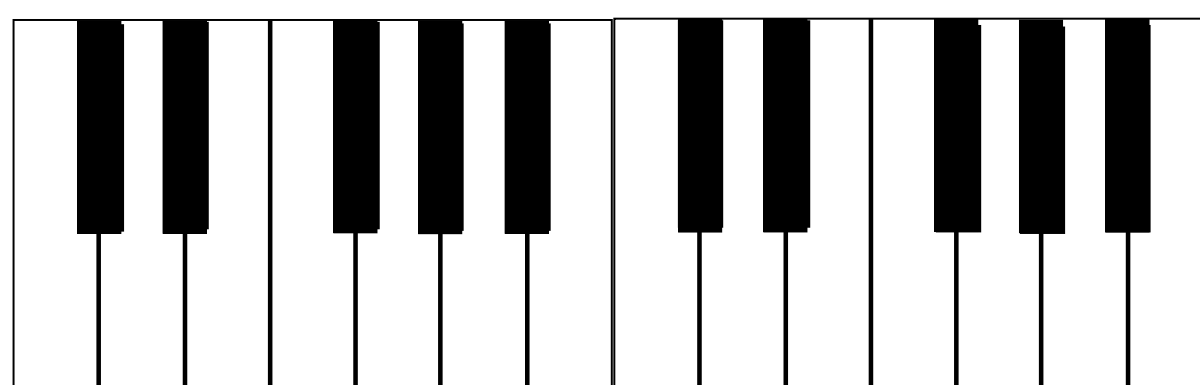
11 D Major

16 A Major

21 E Major

26 B Major

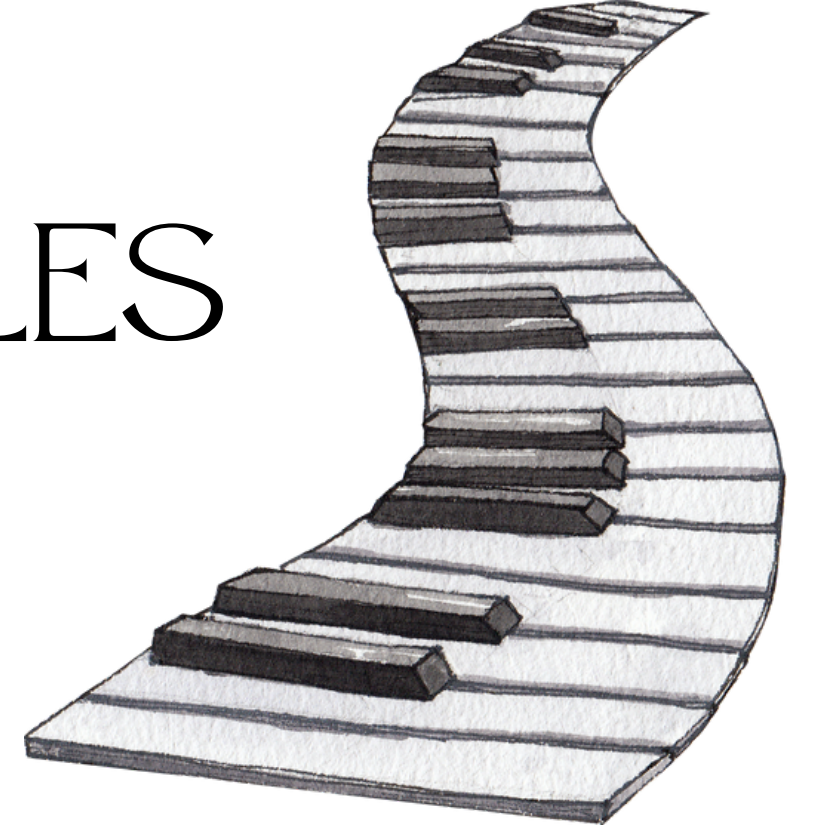
✦ use lever key for A#



formula for major scales: whole step, whole step, half step, whole step, whole step, whole step, half step

TWO OCTAVE MAJOR SCALES

Flat Scales



2

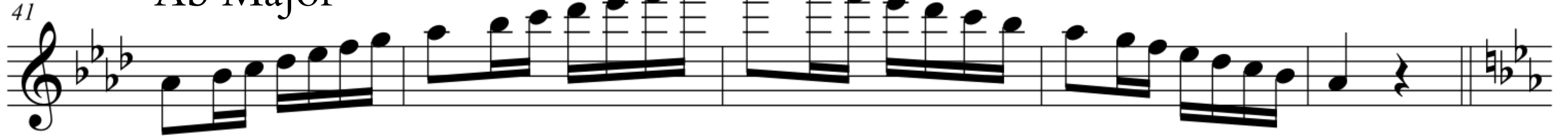
Gb Major



Db Major



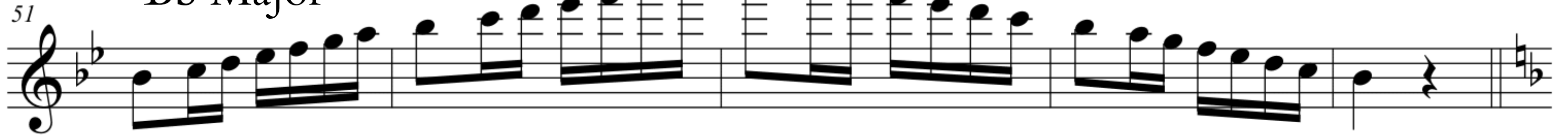
Ab Major



Eb Major



Bb Major



F Major



✦ use lever key for Bb

B E A D G C F

order of flats

order of sharps